

1963-1967 Corvette Assembly Process

**Trim-Frame-Engine Dress
NCRS National Convention
July 20, 2011**

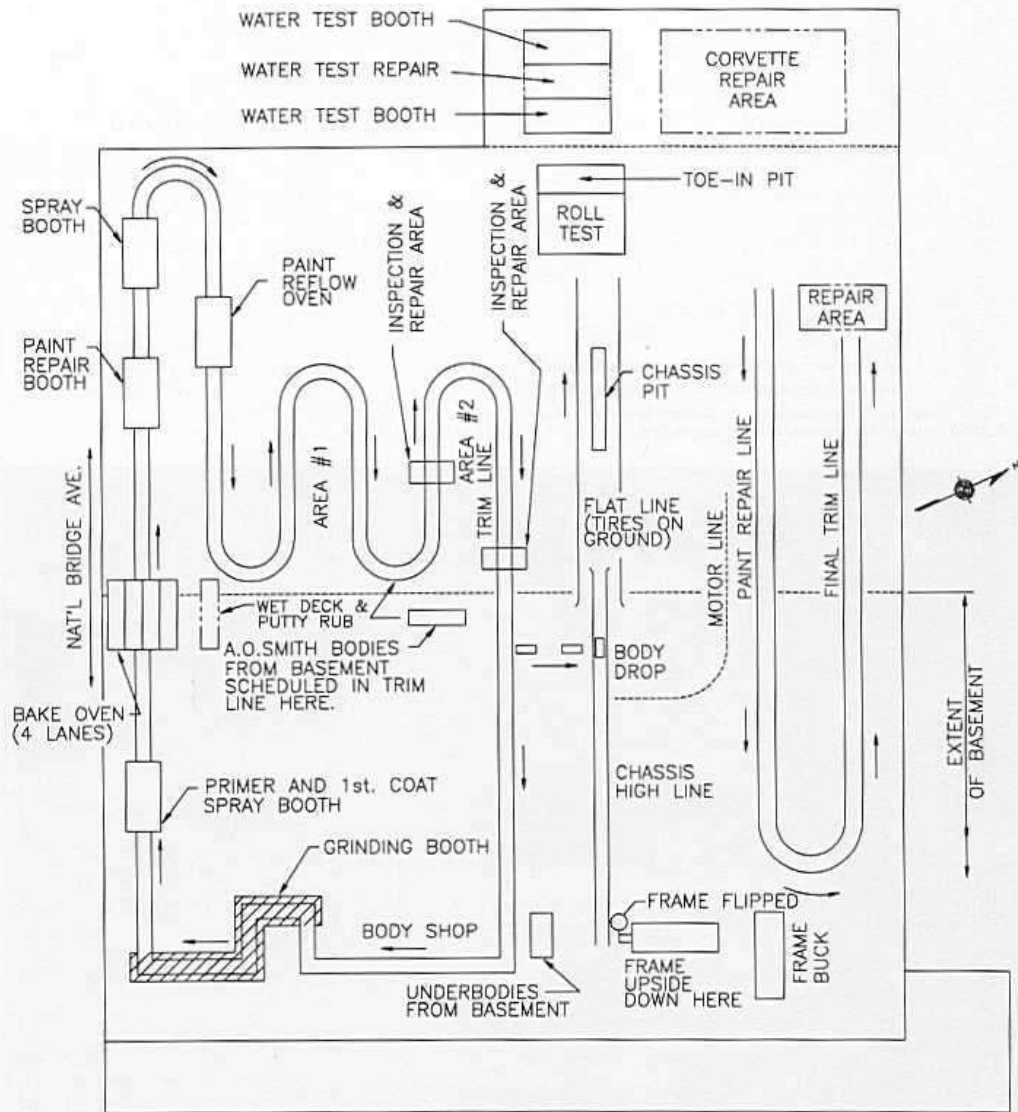
John Hinckley

Trim To Engine Dress Sequence

- **Hard Trim Line - Body On Floor Truck**
- **Frame Line - Inverted On Conveyor**
- **Engine Dress Line - Overhead Conveyor**

Hard Trim Line

- **Trim Tag, VIN Plate & Broadcast**
- **Heater & A/C, Wipers, Pedals**
- **Interior, Exterior, Underhood Hardware**
- **Windshield, Back Window, Side Glass**
- **Instrument Panel & Cluster**
- **Weatherstrips**
- **Hardtop Subassembly & Install**



CORVETTE BLDG.

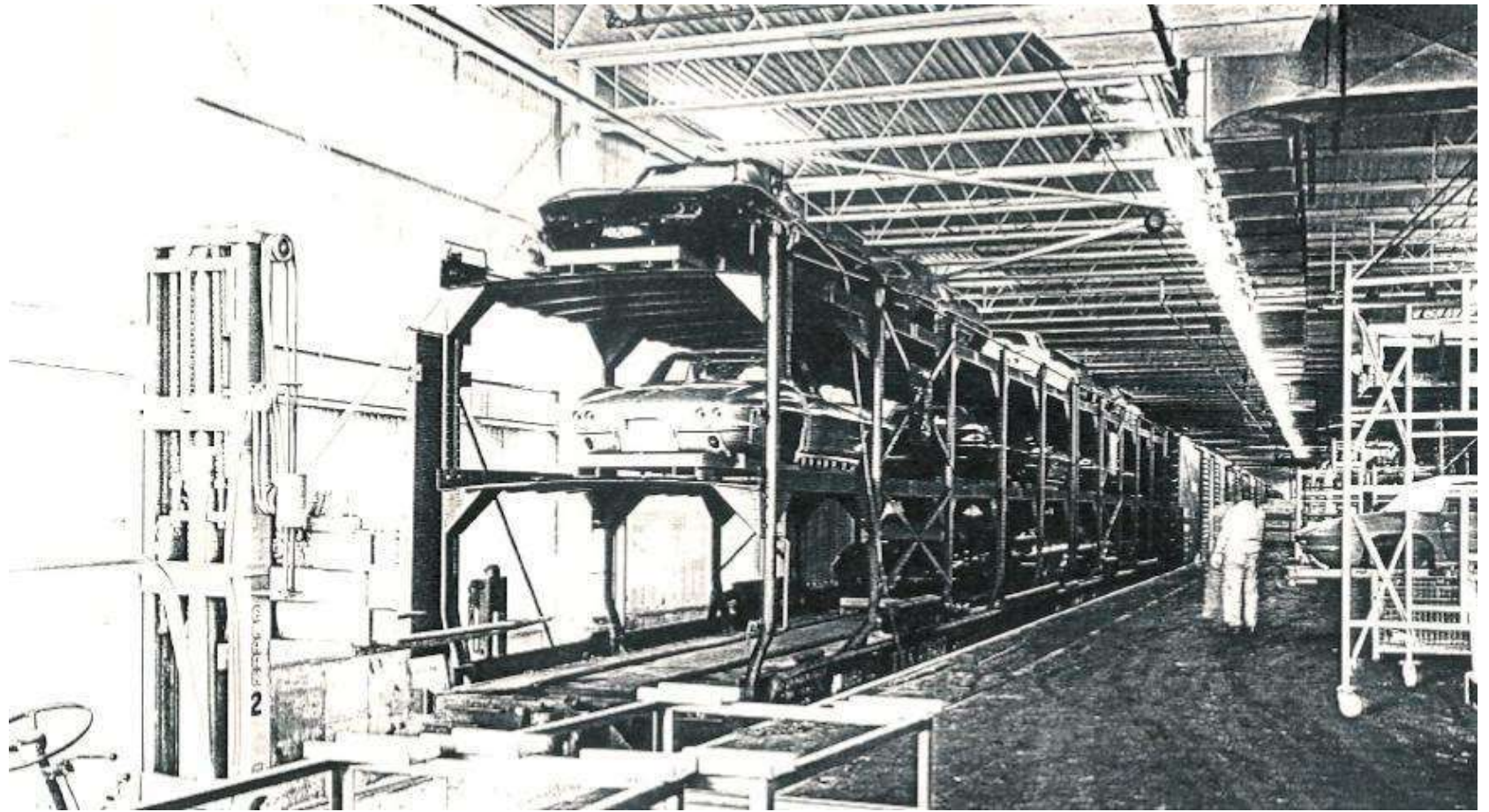
R.R. (TYP)

NOT TO SCALE











CHEVROLET DIV. GENERAL MOTORS CORP.
DETROIT MICHIGAN

STYLE
TRIM

1

BODY
PAINT

BODY BY CHEVROLET

G18 DETROIT MICHIGAN
STYLE 66 467
TRIM 418BK

| S5313
978AA

BODY
PAINT

BODY BY CHEVROLET

CHE
1

APPROVED
INSP

CHEVROLET DIV. GENERAL MOTORS CORP.
DETROIT MICHIGAN
B02
STYLE 67 467 | A-0495 BODY
TRIM STD. | 976 PAINT

BODY BY CHEVROLET



CHEVROLET

30837S111064



3Q837S120537 • toll free 888-592-5000

CHEVROLET DD

194375S115743

17
NARC
LAW
DC
1838
INDIAL



M. Hanson

BODY BROADCAST COPY

PROD. DATE	SEQUENCE	SERIAL NO.	KEY NUMBERS		IDENT. NUMBER	BODY COLOR		TRIM	AMP
	687	548791	4J34	1L79	173106	5252	A	.	

MODEL	TRANS.		SEAT	ENGINE		A/C	TRAC	BRAK	FUEL	SPECIAL BODY		LOW VOLUME OPTIONS								
12437	4	F	B	8	G	.	.	D	#	.	S	.	D

UP	SEAT	DOOR	A/TRAY	CLUSTER		CIGAR	TRAC	CLOCK	GAUG	SEAT	CONSOLE		42	43	44	45	46	47	48	49	50
BC	AA	#	#	.	NK	#	.	D	#	FA	#	#	#	#	.

REAR	53	54	SHAKE		57	58	59	60	61	62	63	64	65	66	67	FLOOR MAT		70	71	72	73	74	75
UN	.	C	CU	.	EA	TK	AN	.	CT	J	#	#

RADIO				80	81	82	83	84	85	BATTERY		HORN		94	FUEL LP		97	98	99
P	2	.	A	07	Y55	.	2	.	A	VZ	.	#	.

FENDER	104	105	106	107	108	109	110	111	112	113	114	115	116	117	118	119	120	RADIATOR		RADIATOR HOSE	
YA	.	G	.	#	#	.	B	D	CF	5	.	G	UH	JR	SM		

127	128	WHEEL		134	135	HIGHWAY (OR COPO) FRONT TIRES				SPECIAL REAR TIRES										
DX	LJ	XX	AD	.	5	E7015	44NB

ZONE	DEALER	ORDER NO.	FMSZ OR COPO NO.	ORDER RECEIVED	AT PLANT DATE
44	291	MD1042		1031	

CHEV. 100 92 REV. 8/68











































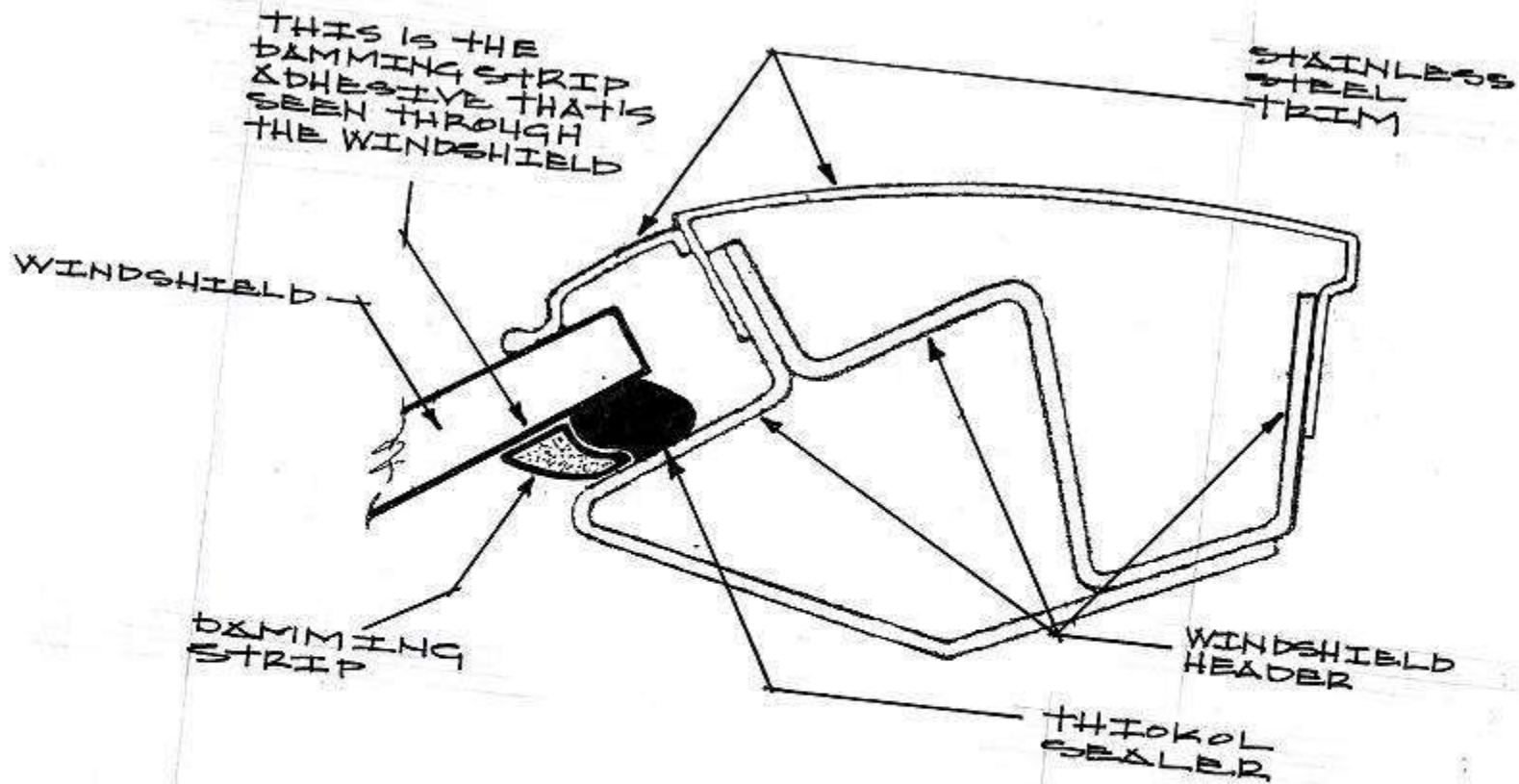












- | PIECE DAMMING STRIP
- | PIECE DAMMING STRIP WITH THIOLOL
- | PIECE ADHESIVE STRIP
- NOTE FIBERS
- NOTE COLOR OF ADHESIVE



























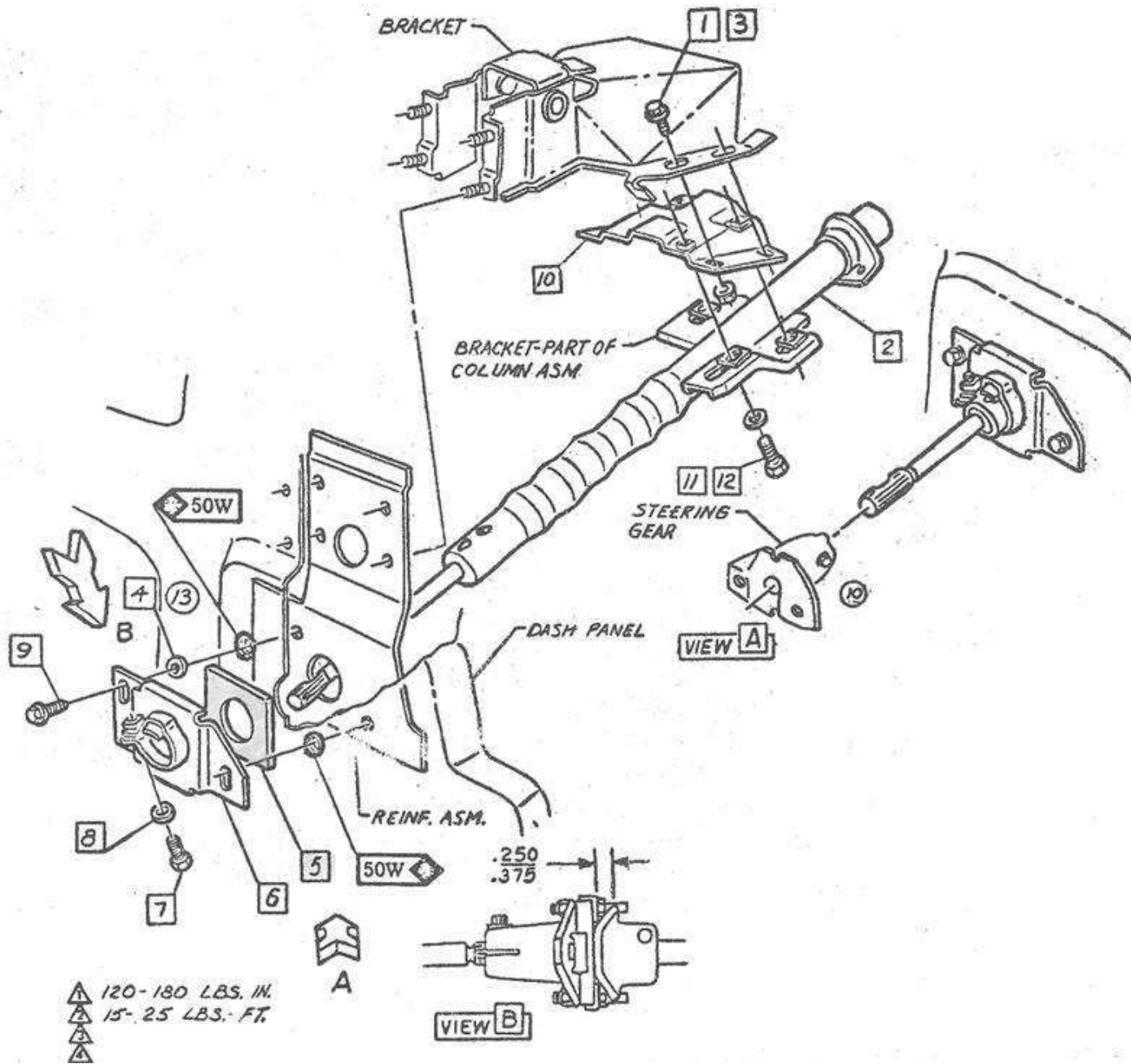










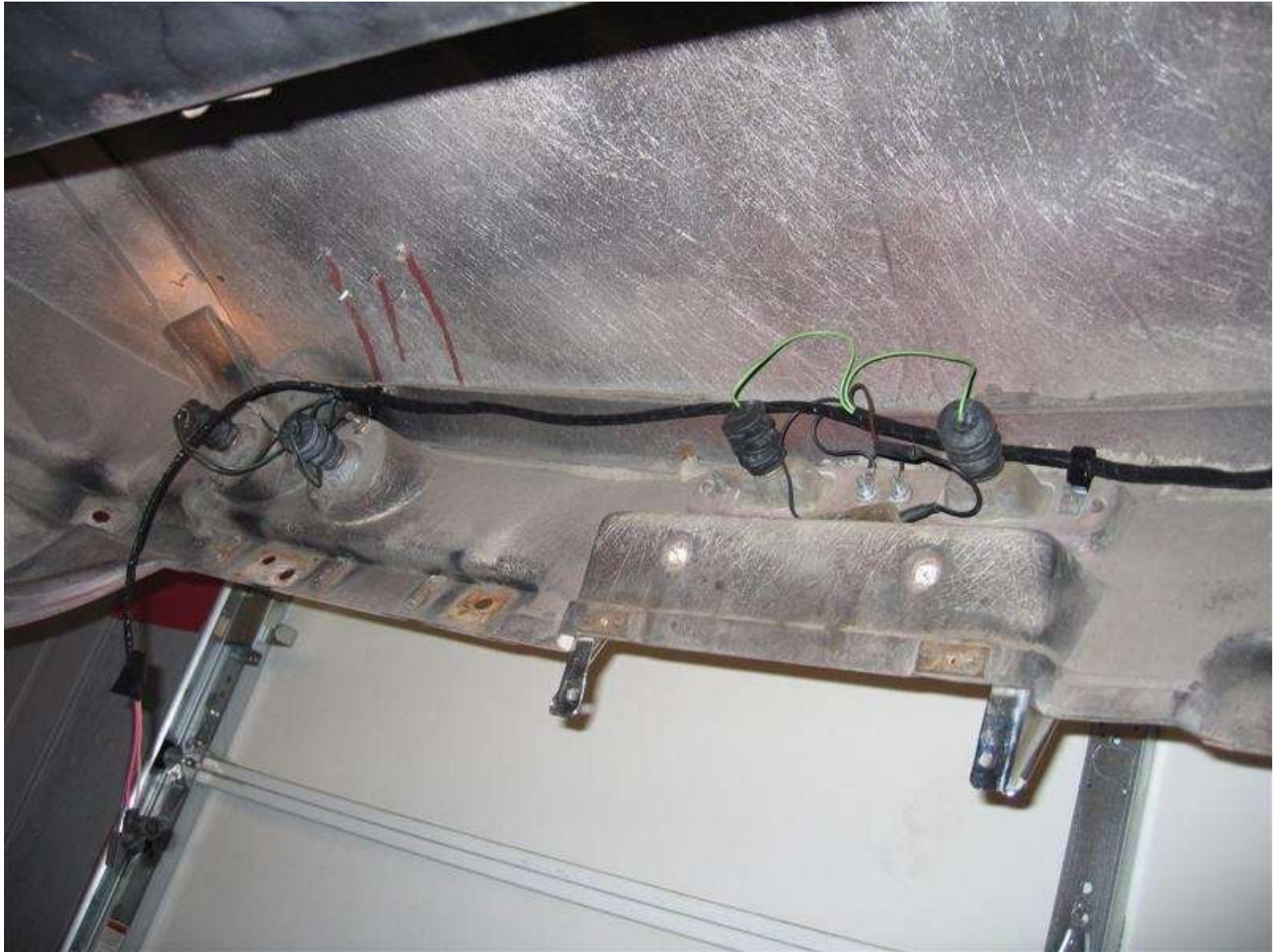




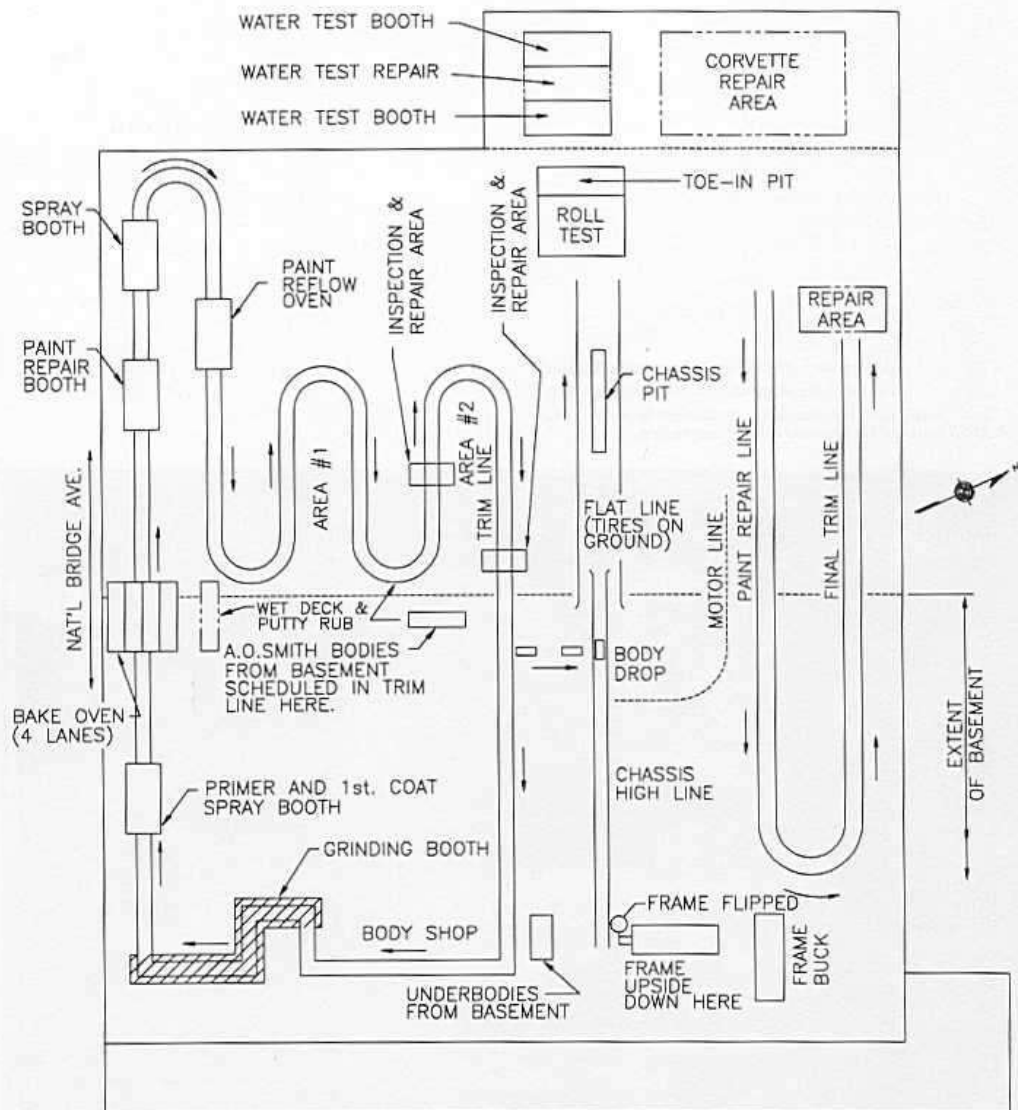












CORVETTE BLDG.

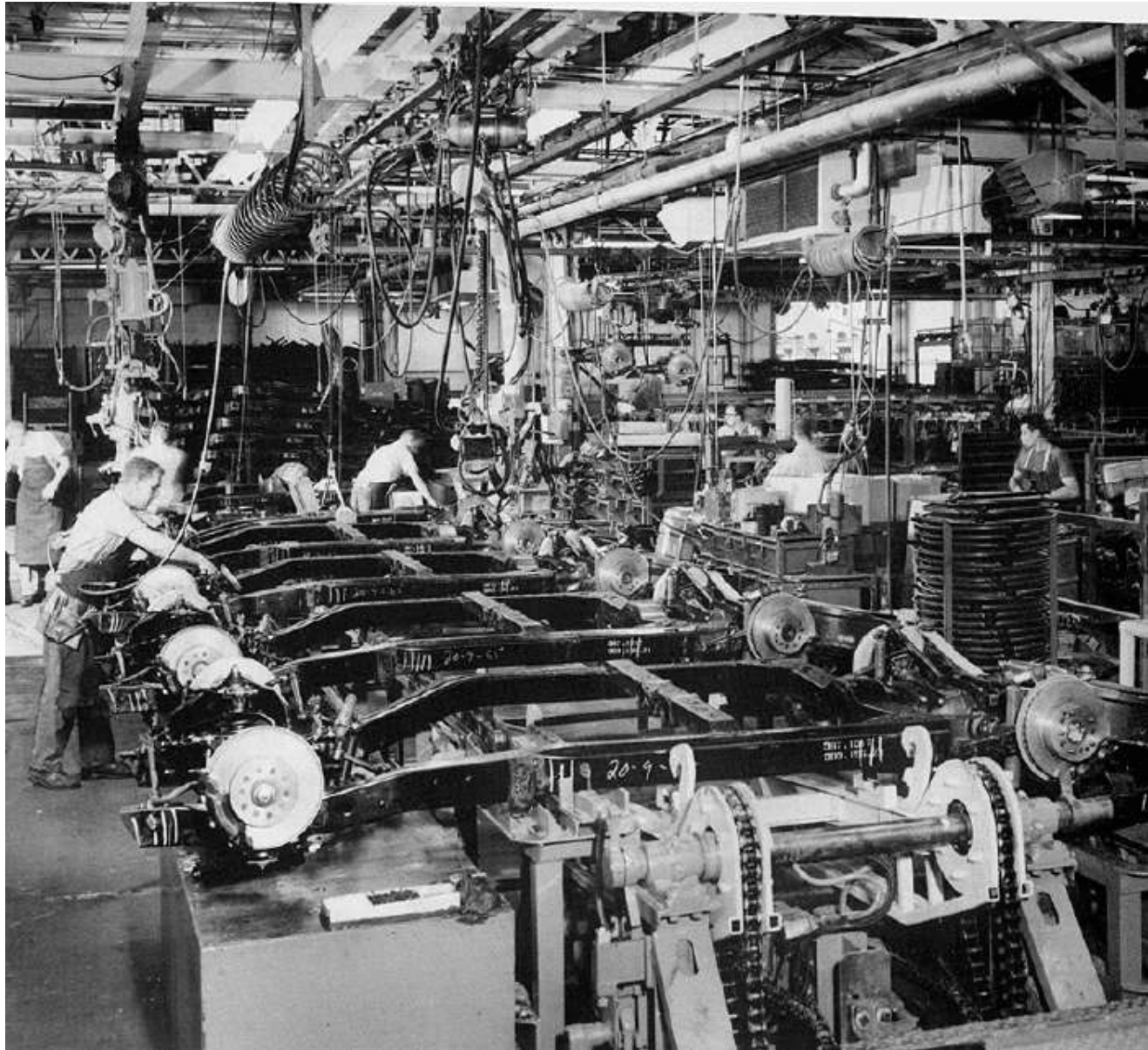
R.R. (TYP)

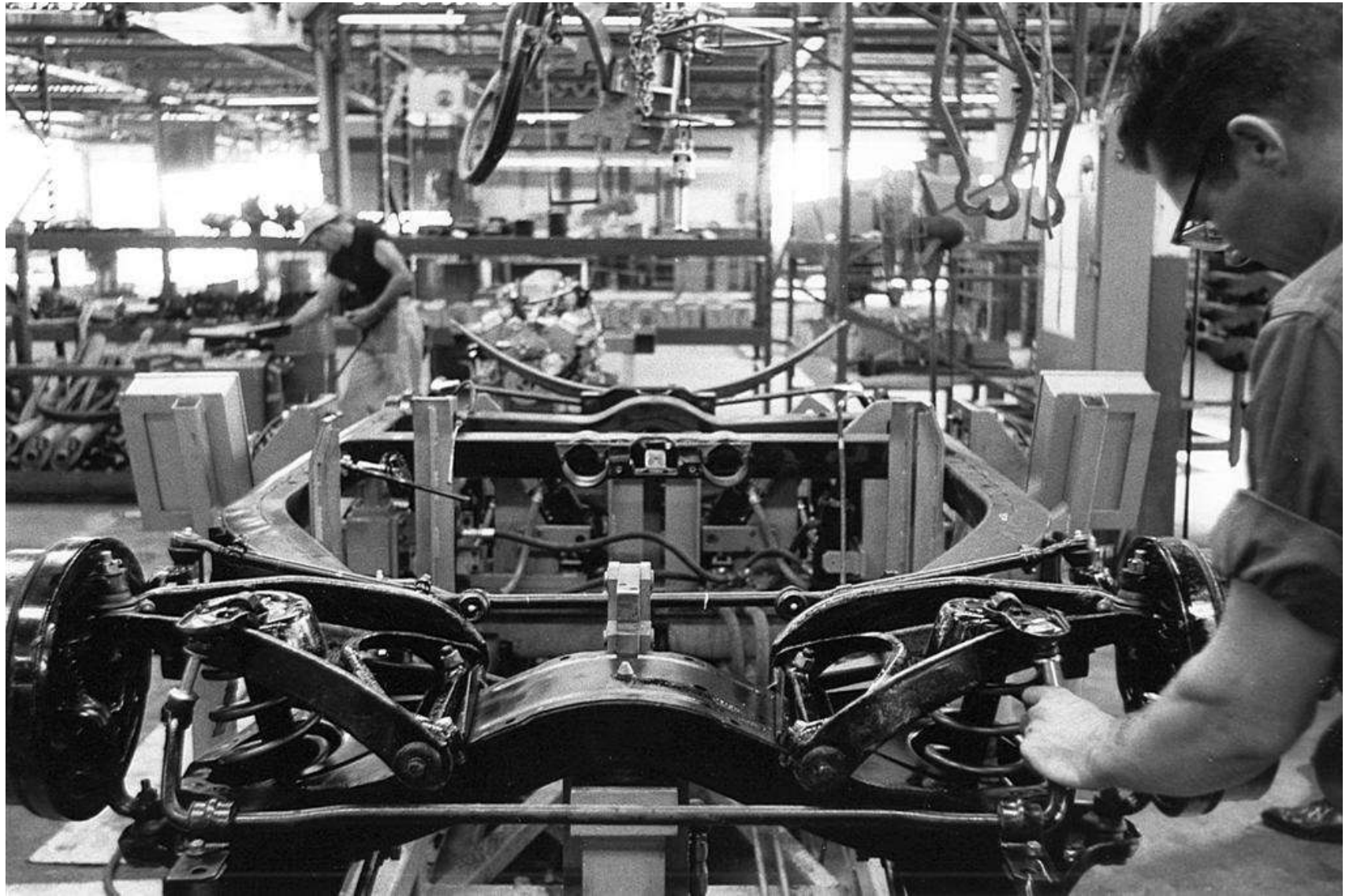
NOT TO SCALE

Frame Line

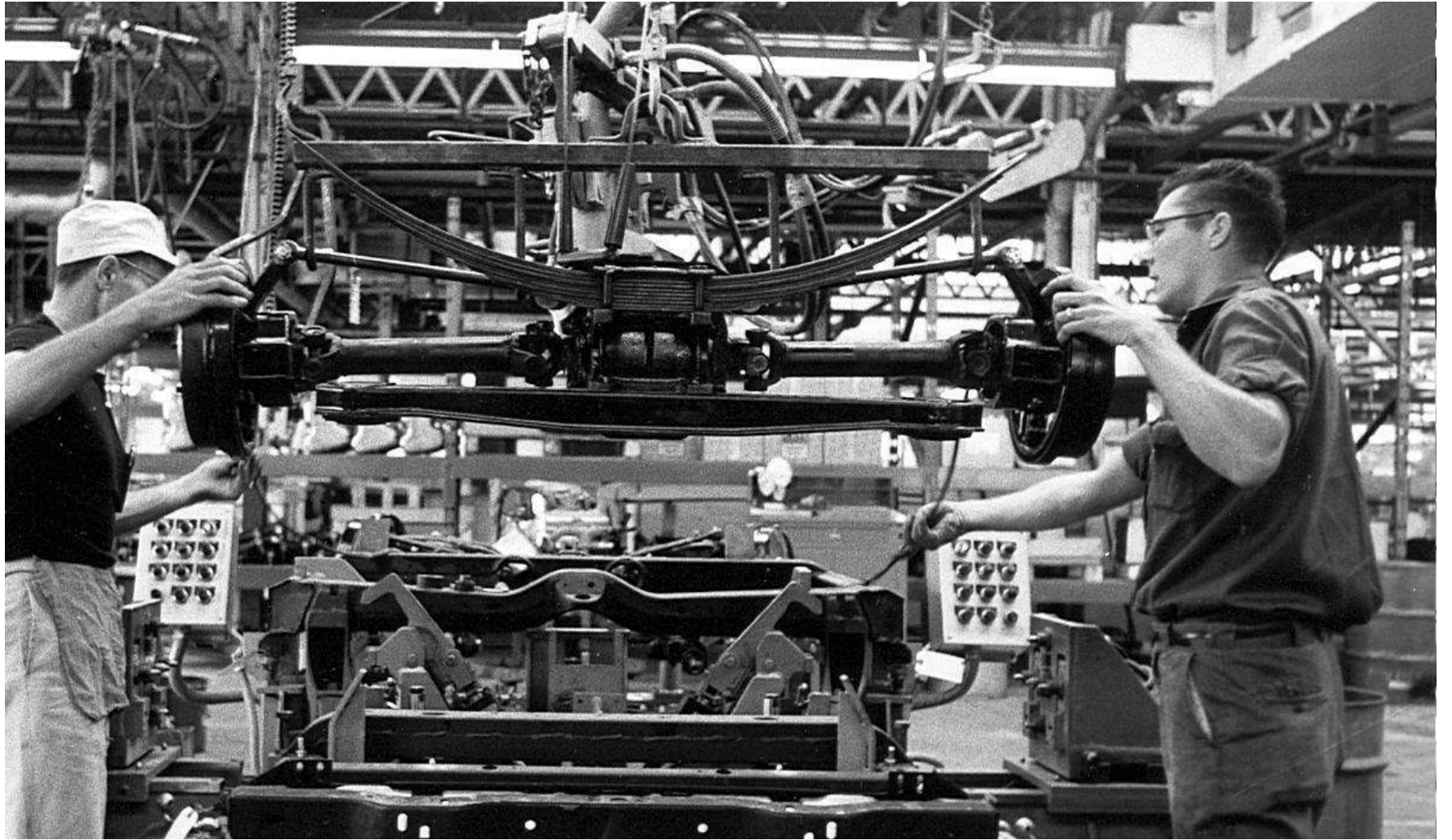
- **Front Suspension & Caster/Camber**
- **Body Mount Shim Determination**
- **Steering Linkage**
- **Rear Suspension & Camber & Toe-In**
- **Spare Tire Tub & Tray**



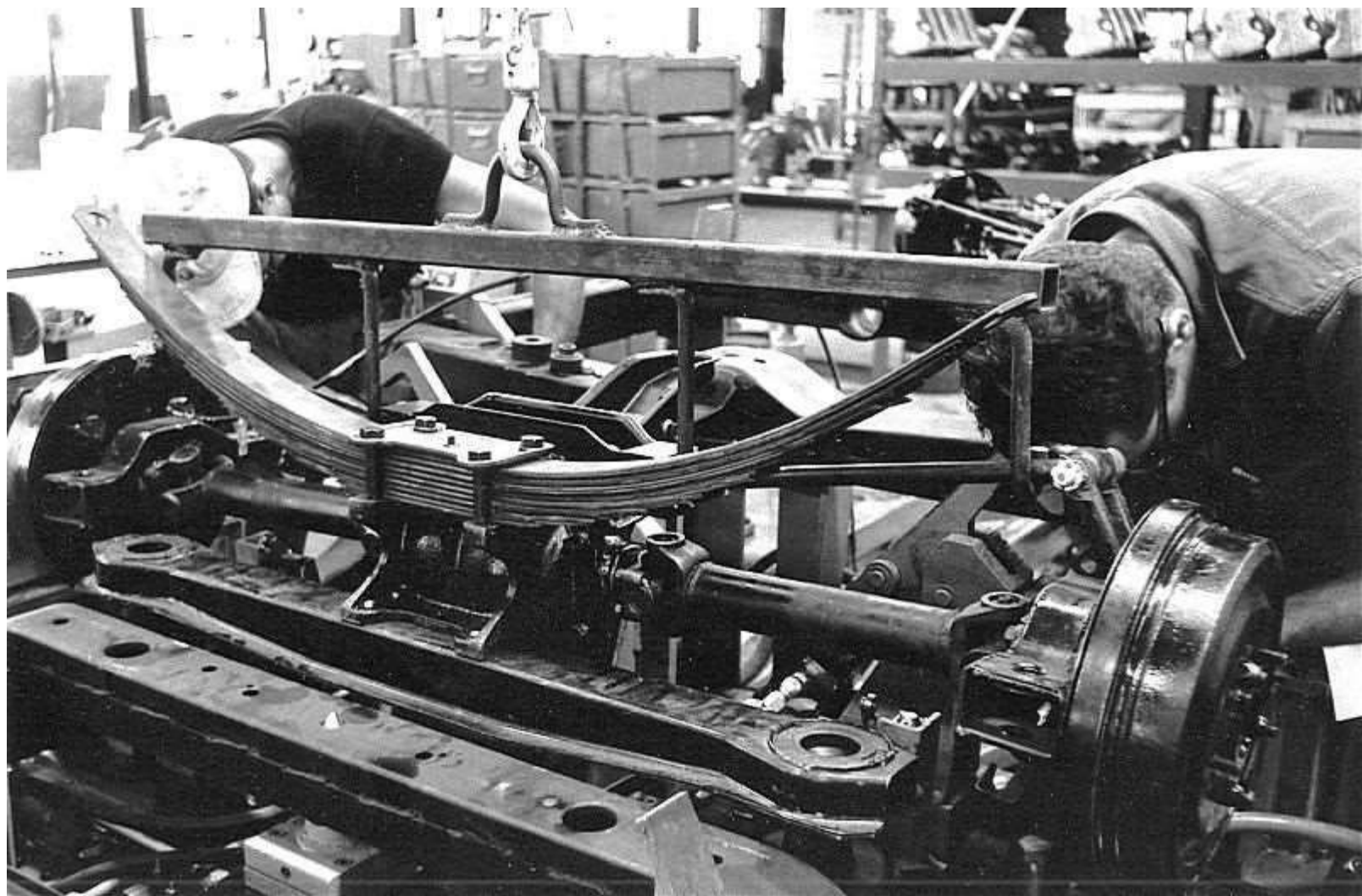






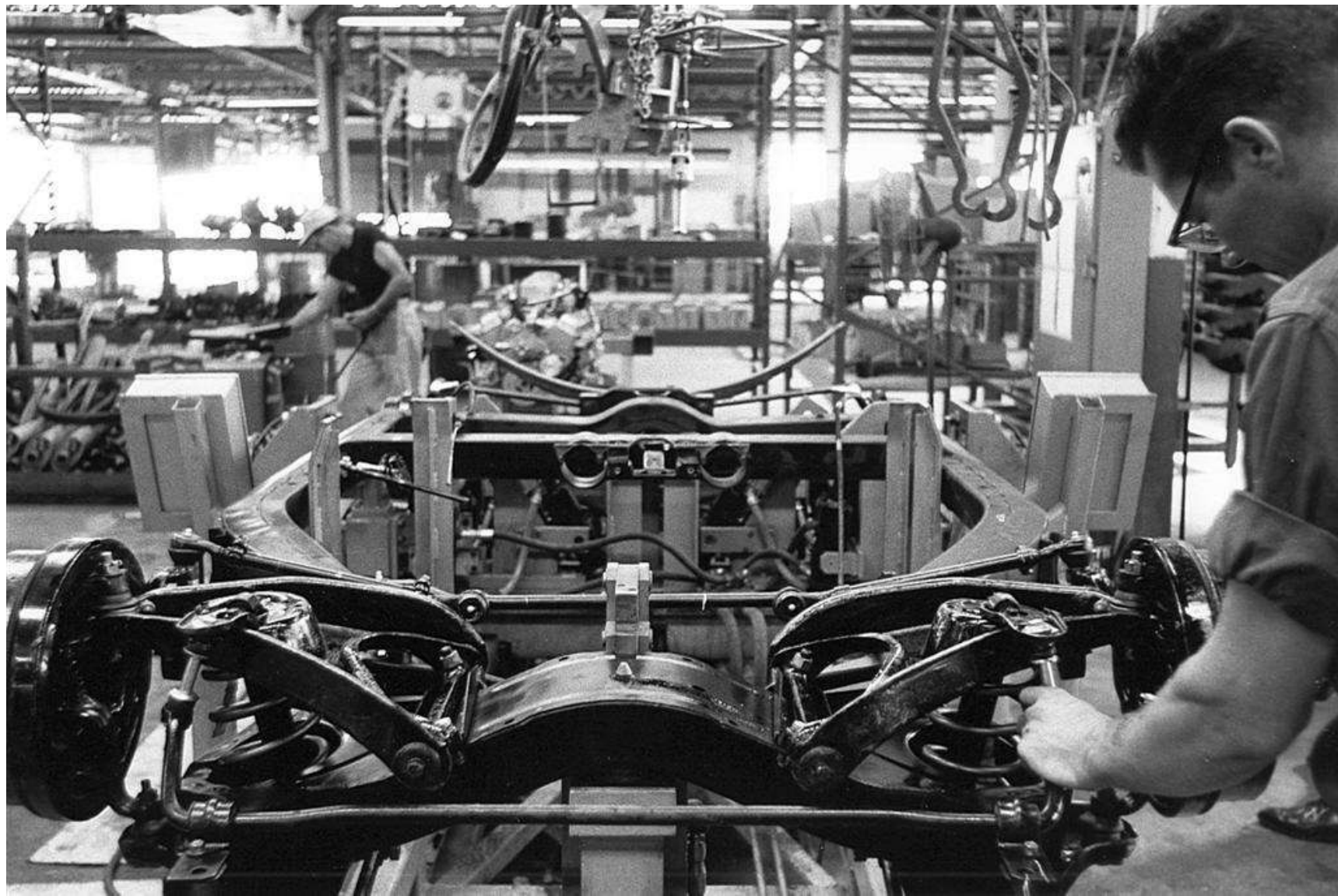












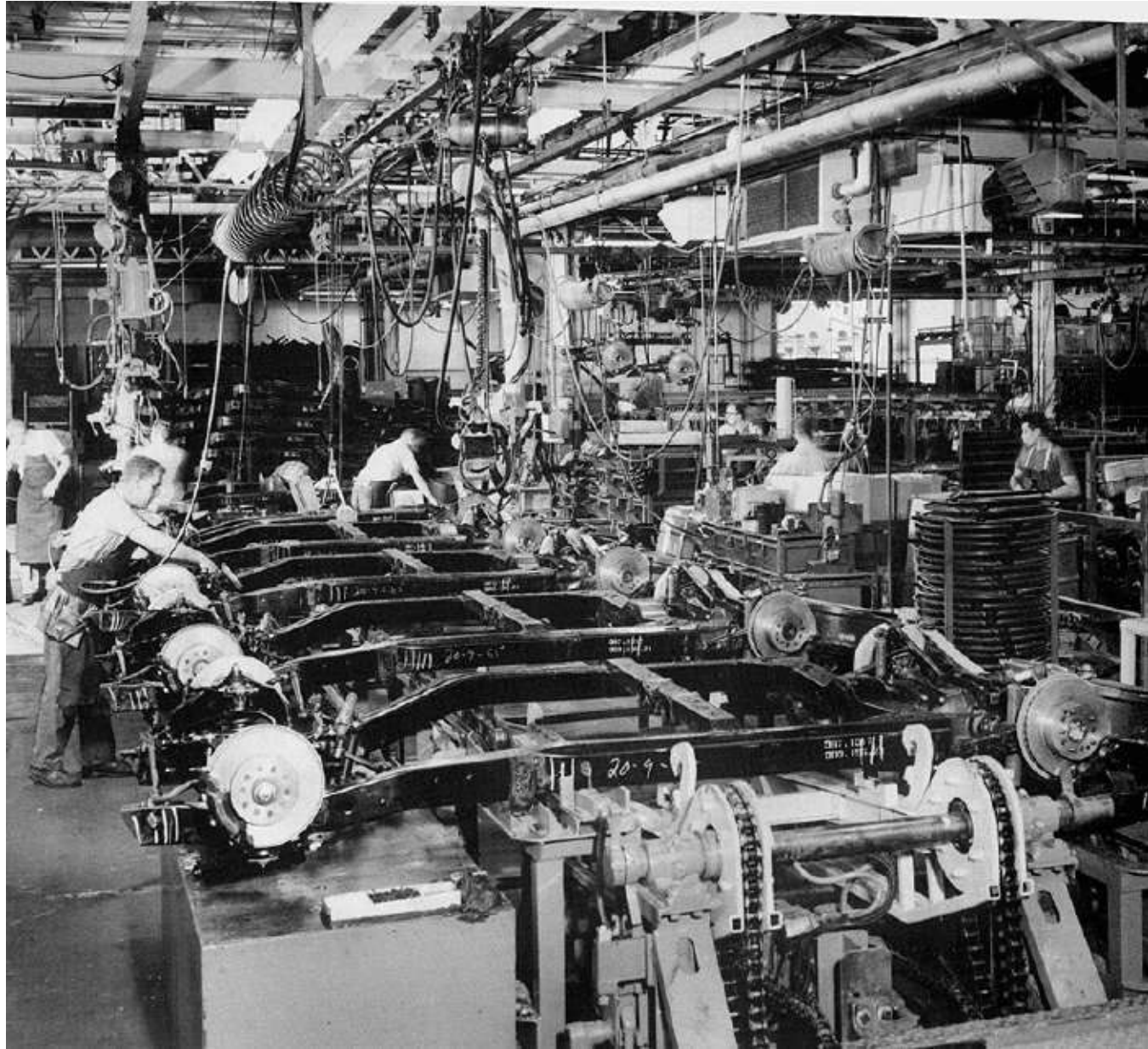


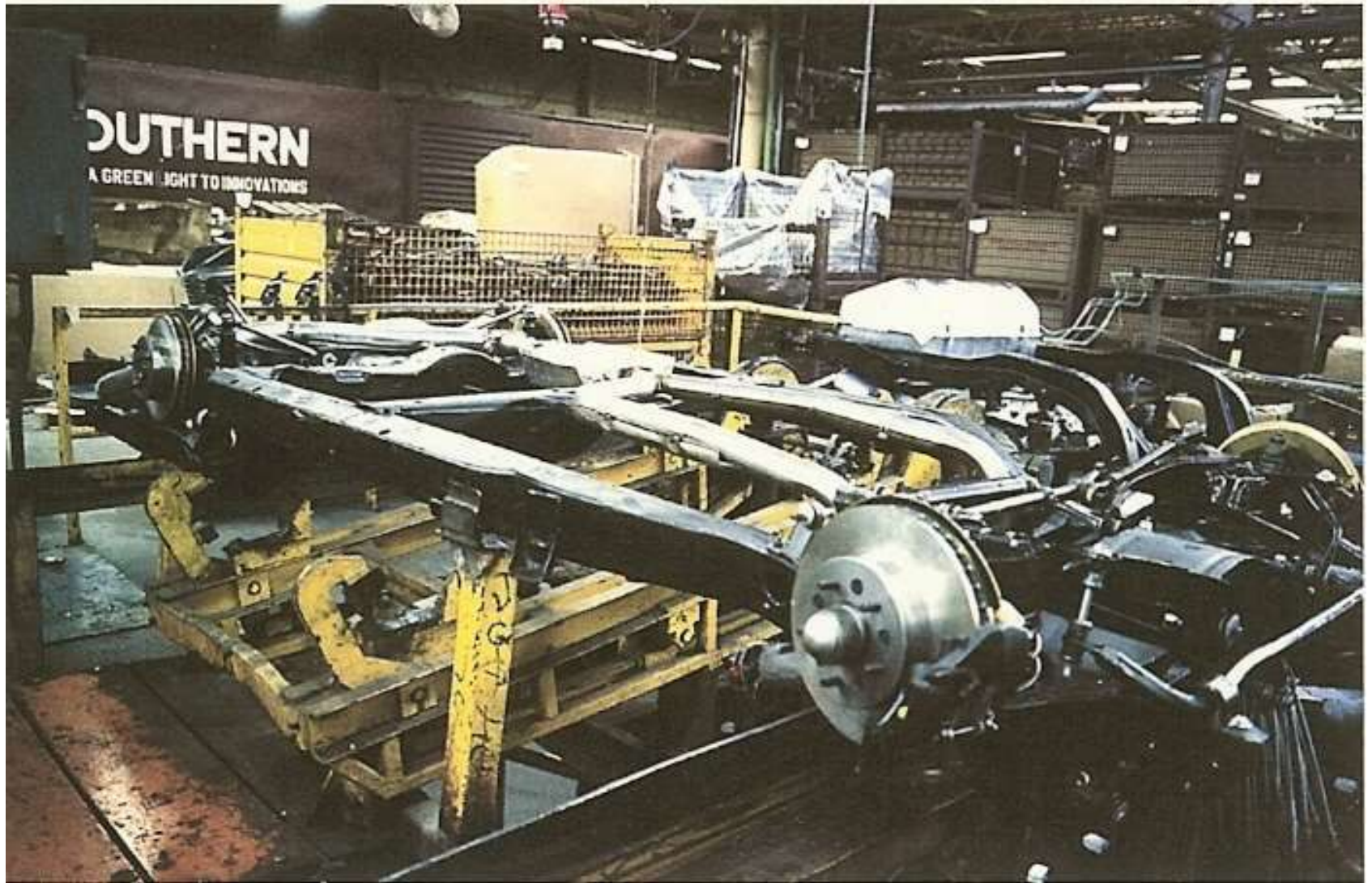


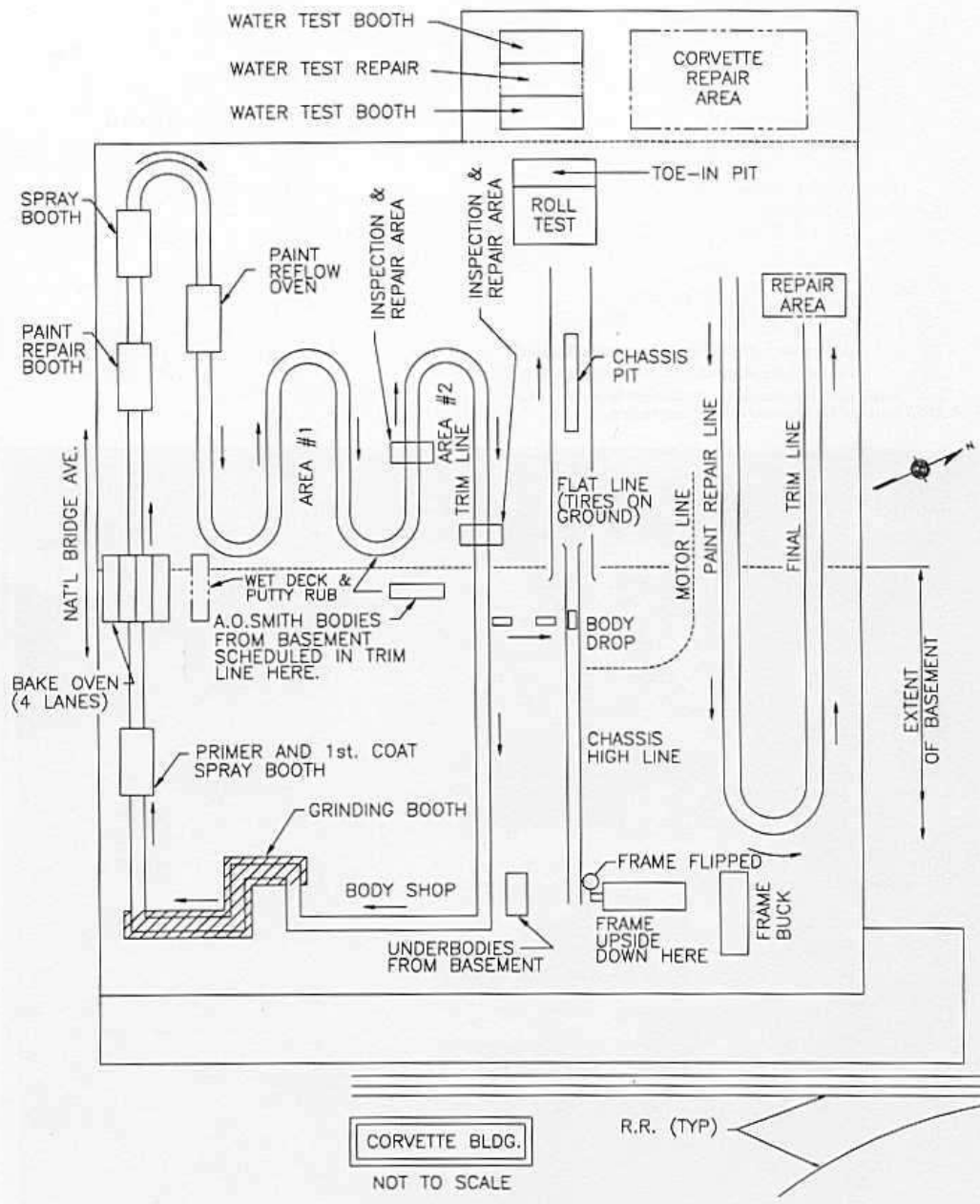








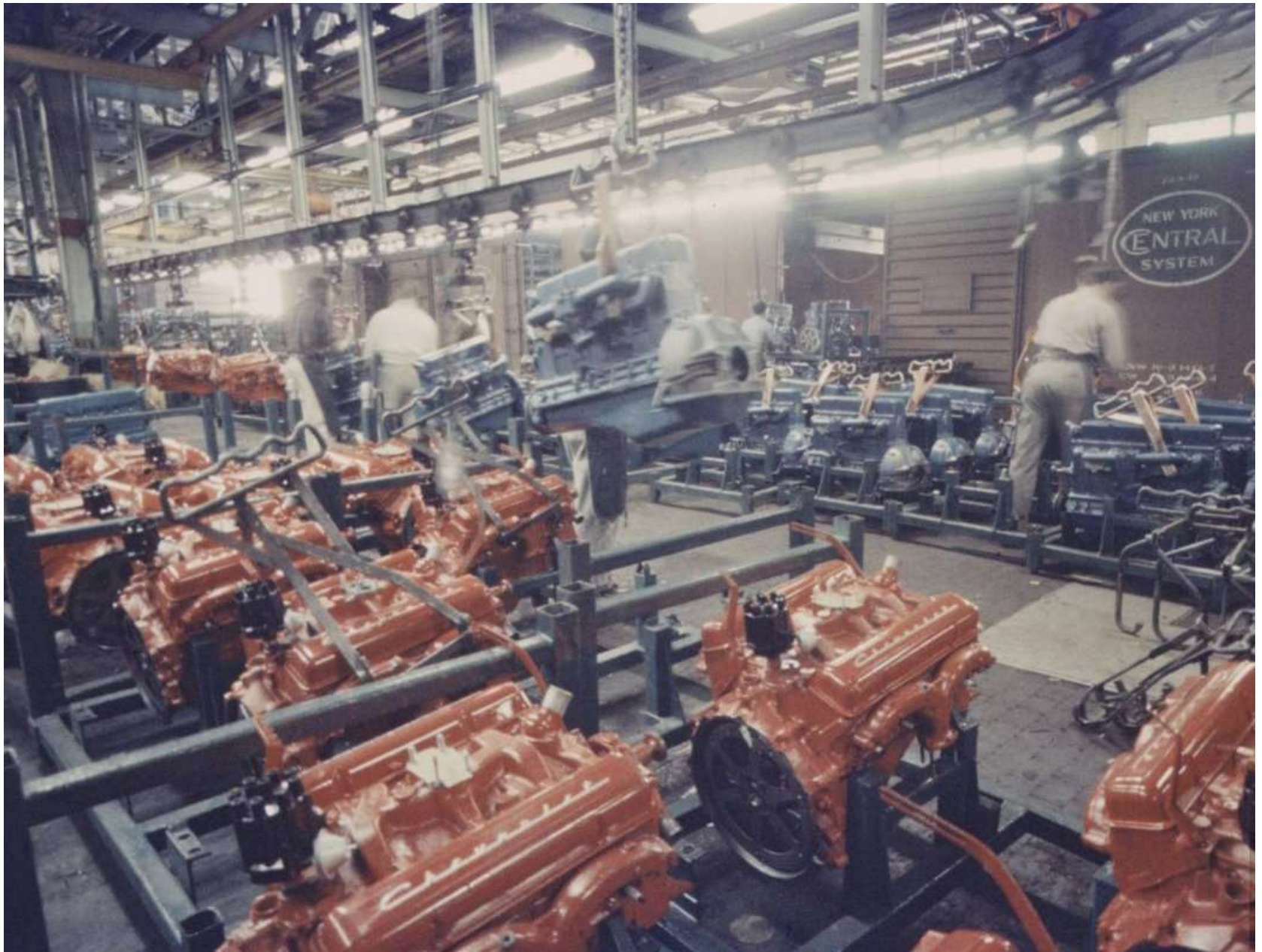


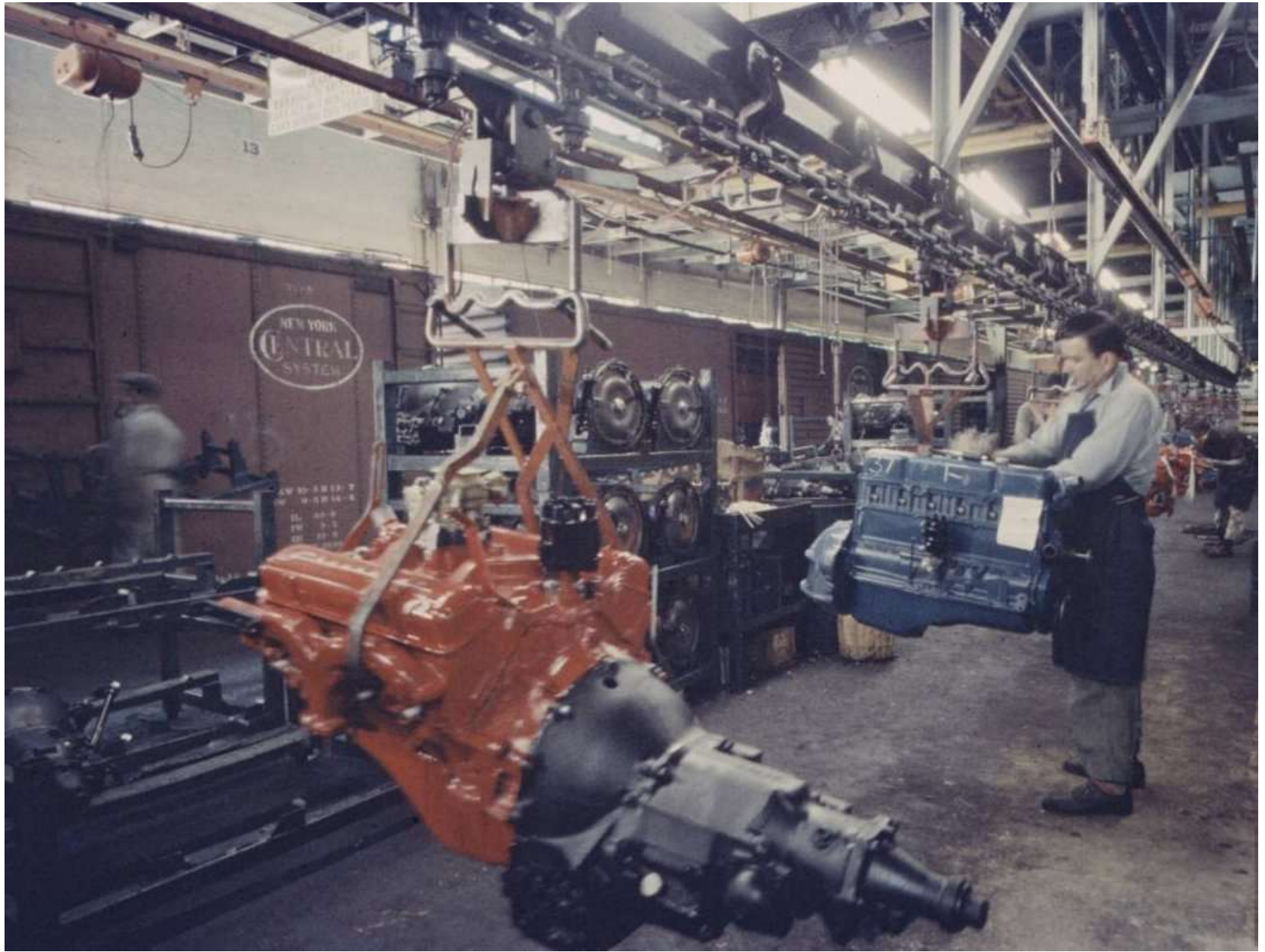


Engine Dress Line

- **Hang Engine & Transmission**
- **VIN Stamp**
- **Install Accessories**
- **Engine Oil & Transmission Fluid**
- **Send To Chassis Line**







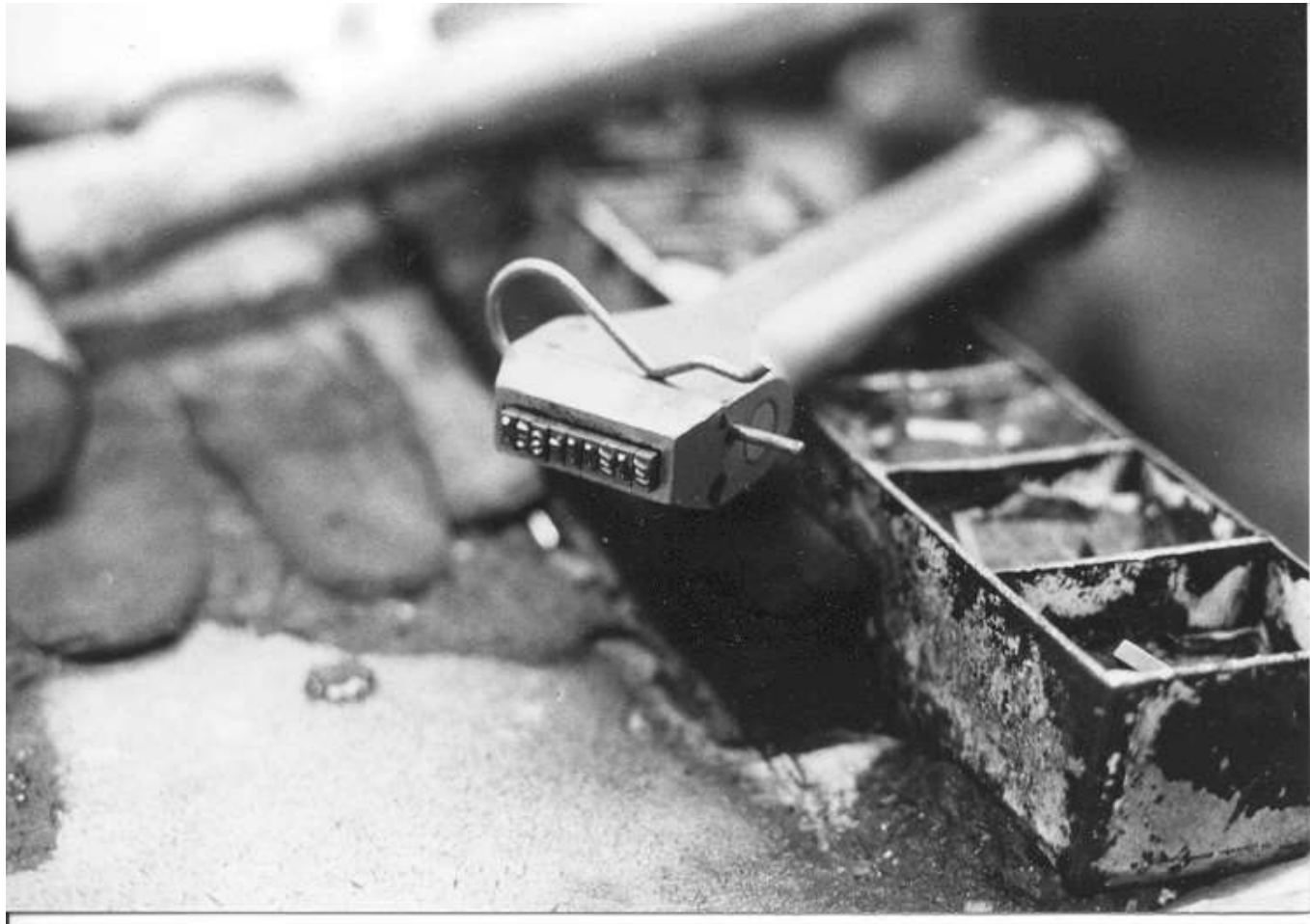




7120401

V060IHE









M. Hanson









